

SUBJECTS CERTIFICATE

I, BEAULAH LAMAR, DO HEREBY CERTIFY THAT I AM A PERSONAL, LAND SURVEYOR, AND THAT I HAD CERTIFICATED TO THE STATE OF UTAH AND AM CURRENTLY LICENSED AS A LAND SURVEYOR. I HAVE CONDUCTED A VISUAL INSPECTION OF THE PLAT AND THE RECORDS THEREON AND HAVE FOUND THE SAME TO BE CORRECT AND ACCURATE AND THAT THE SAME HAVE BEEN CORRECTLY SURVEYED AND BOUND ON THE RECORD AS SHOWN ON THIS PLAT.

BOUNDARY DESCRIPTION

LOT 1 OF PARK AVENUE RETAIL PLAT 1 AMENDED AS SHOWN ON THE RECORDS OF THE SALT LAKE COUNTY CLERK'S OFFICE.



AMENDING LOT 1 OF PARK AVENUE RETAIL PLAT 1 AMENDED

PARK AVENUE RETAIL PLAT 1 AMENDED

AMENDING LOT 1 OF PARK AVENUE RETAIL PLAT 1

AMENDING LOT 1 OF PARK AVENUE RETAIL PLAT 1

AMENDING LOT 1 OF PARK AVENUE RETAIL PLAT 1

AMENDING LOT 1 OF PARK AVENUE RETAIL PLAT 1

AMENDING LOT 1 OF PARK AVENUE RETAIL PLAT 1

AMENDING LOT 1 OF PARK AVENUE RETAIL PLAT 1

AMENDING LOT 1 OF PARK AVENUE RETAIL PLAT 1

AMENDING LOT 1 OF PARK AVENUE RETAIL PLAT 1

AMENDING LOT 1 OF PARK AVENUE RETAIL PLAT 1

AMENDING LOT 1 OF PARK AVENUE RETAIL PLAT 1

AMENDING LOT 1 OF PARK AVENUE RETAIL PLAT 1

AMENDING LOT 1 OF PARK AVENUE RETAIL PLAT 1

AMENDING LOT 1 OF PARK AVENUE RETAIL PLAT 1

AMENDING LOT 1 OF PARK AVENUE RETAIL PLAT 1

AMENDING LOT 1 OF PARK AVENUE RETAIL PLAT 1

AMENDING LOT 1 OF PARK AVENUE RETAIL PLAT 1

AMENDING LOT 1 OF PARK AVENUE RETAIL PLAT 1

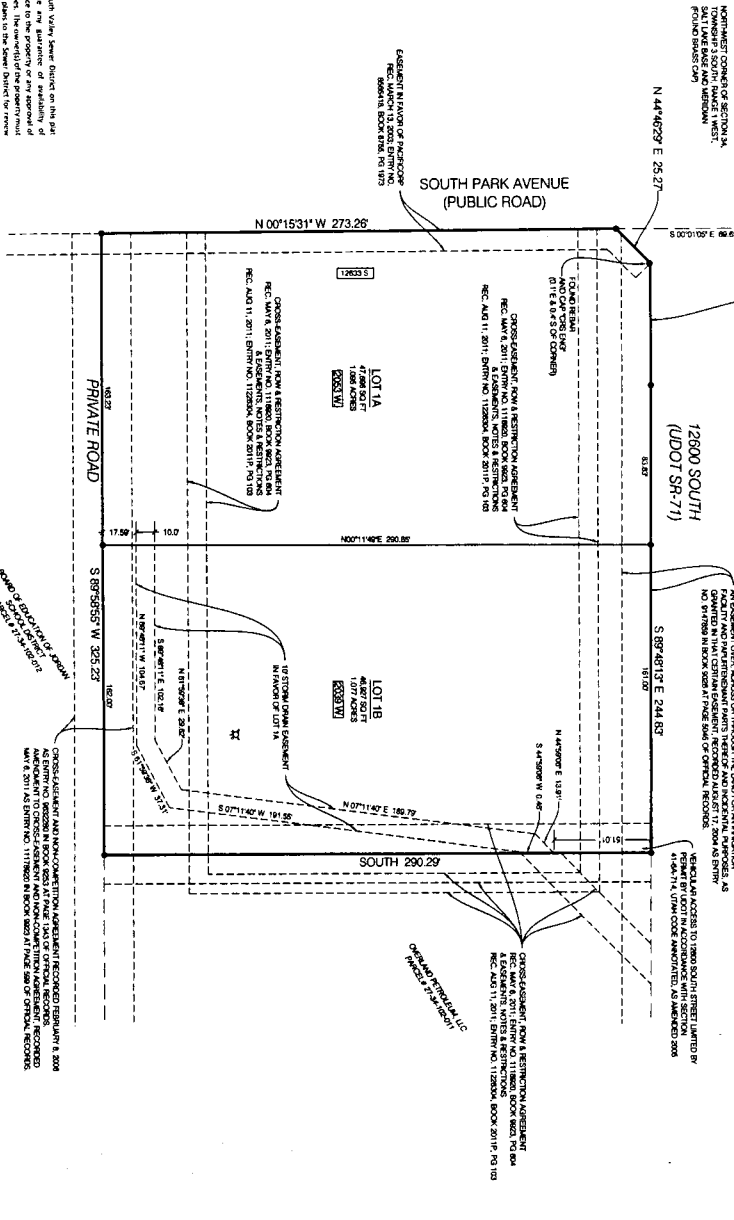
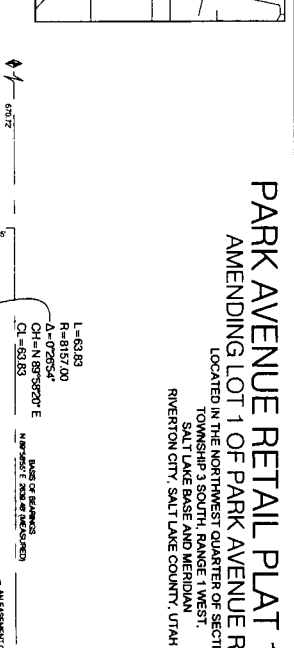
AMENDING LOT 1 OF PARK AVENUE RETAIL PLAT 1

AMENDING LOT 1 OF PARK AVENUE RETAIL PLAT 1

AMENDING LOT 1 OF PARK AVENUE RETAIL PLAT 1



GRAPHIC SCALE  
1" = 200'



OWNER/DEVELOPER:  
RALPH JOHNSON  
6770 S 500 E #302  
MIDVALE, UT 84047  
801.556.6577  
rjohn.th@gmail.com



BENCHMARK ENGINEERING & LAND SURVEYING  
1601 West Valley Parkway  
Midvale, UT 84047  
(801) 556-6577

APPROVED BY THE RIVINGTON CITY WATER DEPARTMENT  
DATE: 12/15/2009

APPROVED BY THE RIVINGTON CITY HEALTH DEPT.  
DATE: 12/15/2009

APPROVED BY THE RIVINGTON CITY PLANNING DEPARTMENT  
DATE: 12/15/2009

APPROVED BY THE SOUTH VALLEY SEWER DISTRICT  
DATE: 12/15/2009

APPROVED BY THE RIVINGTON CITY ENGINEER  
DATE: 12/15/2009

APPROVED BY THE RIVINGTON CITY PLANNING DEPARTMENT  
DATE: 12/15/2009

APPROVED BY THE RIVINGTON CITY COUNCIL  
DATE: 12/15/2009

SALT LAKE COUNTY RECORDED # 12212425  
DATE: 12/15/2009

OWNER/DEVELOPER: RALPH JOHNSON  
6770 S 500 E #302  
MIDVALE, UT 84047  
801.556.6577  
rjohn.th@gmail.com

THE SIGNATURE OF SOUTH VALLEY SEWER DISTRICT ON THIS PLAT IS A SIGNATURE OF THE DISTRICT AND NOT A SIGNATURE OF THE CITY ENGINEER. THE CITY ENGINEER'S SIGNATURE IS REQUIRED FOR THE PLAT TO BE RECORDED IN THE PUBLIC UTILITY SERVICES SYSTEMS AND RECORDS. THE CITY ENGINEER'S SIGNATURE IS REQUIRED FOR THE PLAT TO BE RECORDED IN THE PUBLIC UTILITY SERVICES SYSTEMS AND RECORDS. THE CITY ENGINEER'S SIGNATURE IS REQUIRED FOR THE PLAT TO BE RECORDED IN THE PUBLIC UTILITY SERVICES SYSTEMS AND RECORDS.

APPROVED BY THE RIVINGTON CITY WATER DEPARTMENT  
DATE: 12/15/2009

APPROVED BY THE RIVINGTON CITY HEALTH DEPT.  
DATE: 12/15/2009

APPROVED BY THE RIVINGTON CITY PLANNING DEPARTMENT  
DATE: 12/15/2009

APPROVED BY THE SOUTH VALLEY SEWER DISTRICT  
DATE: 12/15/2009

APPROVED BY THE RIVINGTON CITY ENGINEER  
DATE: 12/15/2009

APPROVED BY THE RIVINGTON CITY PLANNING DEPARTMENT  
DATE: 12/15/2009

APPROVED BY THE RIVINGTON CITY COUNCIL  
DATE: 12/15/2009

SALT LAKE COUNTY RECORDED # 12212425  
DATE: 12/15/2009