

| PID | OWNER | ACRE | PID | OWNER | ACRE |
|------|-----------------------------------|--------|------|-----------------------------------|--------|
| 0018 | Utah Dept of Transportation | 4.880 | 0018 | Utah Dept of Transportation | 4.880 |
| 0019 | Maestas, DAVID, JR | 4.880 | 0019 | Maestas, DAVID, JR | 4.880 |
| 0020 | Jody Stranvey et al | 4.880 | 0020 | Jody Stranvey et al | 4.880 |
| 0022 | Utah Department of Transportation | 4.880 | 0022 | Utah Department of Transportation | 4.880 |
| 0024 | Monveth Farley Lindberg, TRS | 10.760 | 0024 | Monveth Farley Lindberg, TRS | 10.760 |
| 0025 | United States of America | 8.500 | 0025 | United States of America | 8.500 |
| 0026 | United States of America | 17.000 | 0026 | United States of America | 17.000 |
| 0027 | United States of America | 8.500 | 0027 | United States of America | 8.500 |
| 0028 | Utah Dept of Transportation | 17.000 | 0028 | Utah Dept of Transportation | 17.000 |
| 0029 | Nature Conservancy | 8.500 | 0029 | Nature Conservancy | 8.500 |
| 0030 | Nature Conservancy | 16.500 | 0030 | Nature Conservancy | 16.500 |
| 0031 | United States of America | 8.500 | 0031 | United States of America | 8.500 |
| 0032 | United States of America | 16.500 | 0032 | United States of America | 16.500 |

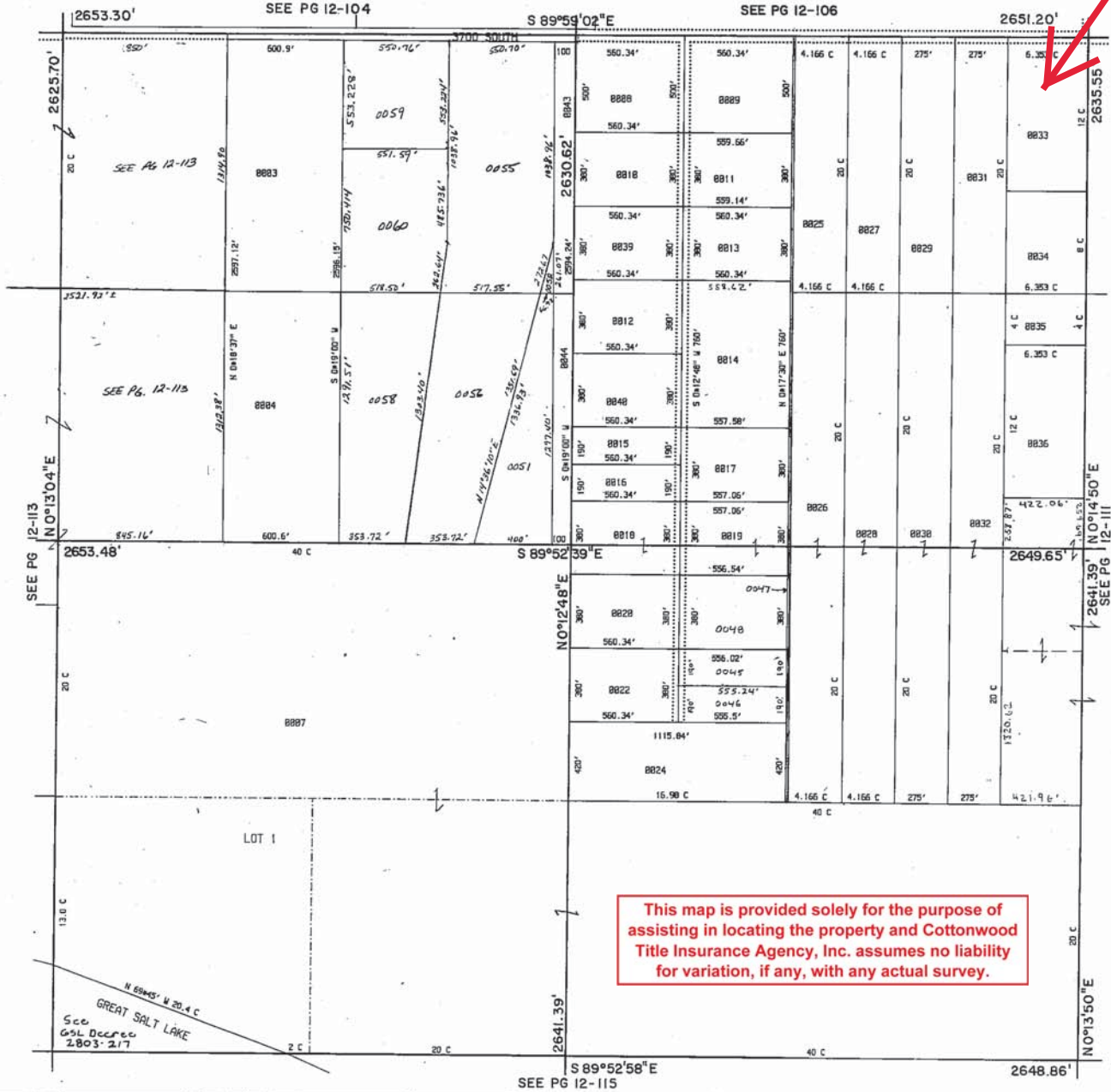
| PID | OWNER | ACRE | PID | OWNER | ACRE |
|------|-----------------------------------|-------|------|-----------------------------------|-------|
| 0033 | Don Bankhead | 7.624 | 0033 | Don Bankhead | 7.624 |
| 0034 | Wasatch Farm Rindlers Corp | 5.080 | 0034 | Wasatch Farm Rindlers Corp | 5.080 |
| 0035 | Wasatch Farm Rindlers Corp | 2.540 | 0035 | Wasatch Farm Rindlers Corp | 2.540 |
| 0036 | L. Utah Dept of Transportation | 7.624 | 0036 | L. Utah Dept of Transportation | 7.624 |
| 0039 | H. C. Massey - TRS | 4.880 | 0039 | H. C. Massey - TRS | 4.880 |
| 0040 | Tamera H Lund | 4.880 | 0040 | Tamera H Lund | 4.880 |
| 0043 | DAVIS COUNTY | 2.981 | 0043 | DAVIS COUNTY | 2.981 |
| 0044 | DAVIS COUNTY | 2.981 | 0044 | DAVIS COUNTY | 2.981 |
| 0045 | Utah Dept of Transportation | 2.440 | 0045 | Utah Dept of Transportation | 2.440 |
| 0046 | Utah Department of Transportation | 2.440 | 0046 | Utah Department of Transportation | 2.440 |
| 0047 | DAVIS COUNTY | 0.500 | 0047 | DAVIS COUNTY | 0.500 |

| PID | OWNER | ACRE | PID | OWNER | ACRE |
|------|-------------------------|--------|------|-------------------------|--------|
| 0048 | DEN. W. WILKINSON | 4.950 | 0048 | DEN. W. WILKINSON | 4.950 |
| 0051 | DAVIS COUNTY | 6.853 | 0051 | DAVIS COUNTY | 6.853 |
| 0052 | DAVIS COUNTY | 1.304 | 0052 | DAVIS COUNTY | 1.304 |
| 0055 | The Nature Conservancy | 16.365 | 0055 | The Nature Conservancy | 16.365 |
| 0056 | The Nature Conservancy | 12.917 | 0056 | The Nature Conservancy | 12.917 |
| 0058 | THE NATURE CONSERVANCY | 12.932 | 0058 | THE NATURE CONSERVANCY | 12.932 |
| 0059 | Nature Conservancy, The | 6.945 | 0059 | Nature Conservancy, The | 6.945 |
| 0060 | THE NATURE CONSERVANCY | 9.403 | 0060 | THE NATURE CONSERVANCY | 9.403 |

PRELIM
12-112
LAST#

NORTH

SCALE
1" = 400'



112

12

ALL SECTION 27 T4N R2W Salt Lake Meridian Davis County, Utah

DAVIS COUNTY GEO-GRAPHIC INFORMATION DIVISION